

NOR-LAKE SCIENTIFIC

UNDERCOUNTER BLOOD BANK REFRIGERATOR

Designed to meet the AABB, ANRC and FDA requirements. Special cabinet incorporates industrial quality with a heavy duty refrigeration system to maintain your valuable products.

Standard Product Features:

- Operating temperature within +1°C to +6°C. Factory preset at +4°C
- Hi / Lo product alarm
- The exterior front, door, top and sides are white painted enamel
- Non-CFC refrigerant
- Back and bottom are galvanized steel
- Cabinet and door are foamed-in-place with CFC Free high density polyurethane foam insulation
- Pull door handle
- Aluminum interior
- Key lock door
- One adjustable gray epoxy coated wire shelf
- Four 4" legs
- 115/60/1 cord and plug
- Base mount refrigeration system
- Refrigerators can be built in on three sides, air intake and exhaust is through the base in front of the unit
- Air-cooled condensing unit with an expansion valve refrigeration system
- Automatic defrost
- Magnetic door gasketing
- Remote contacts
- Temperature chart recorder (freestanding) & chart paper
- Warranties: 18 month parts and labor, 5 year compressor (US and Canada) 18 months parts (International)
- UL and C-UL listed

Optional Features:

- Casters in lieu of legs
- 2" levelers in lieu of legs
- Stainless steel exterior (Galv. back)
- Stainless steel interior
- Reverse hinge door
- Extra shelves



NSBR051WMW/0

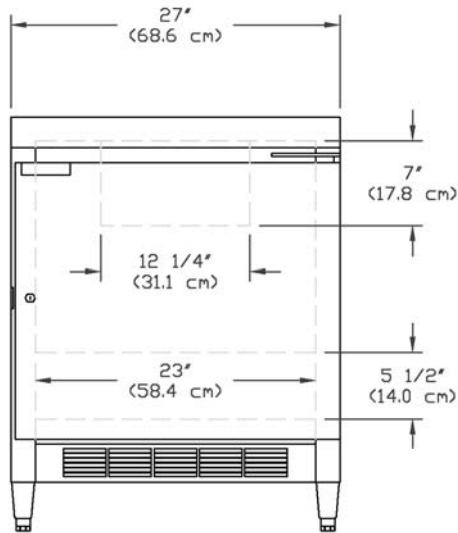
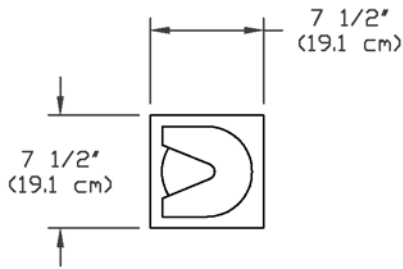
Cabinet Shown With Optional Casters



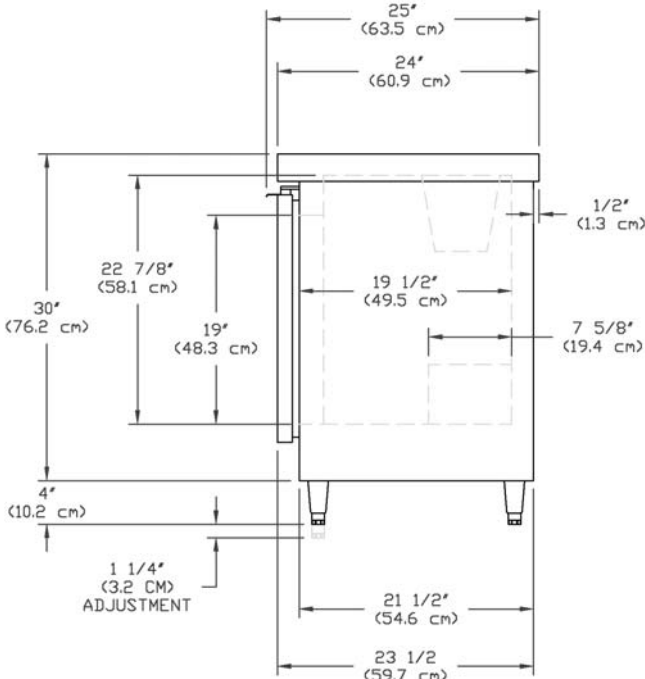
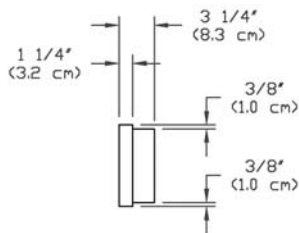
Nor-Lake, Inc.
Registered to ISO 9001:2000
File No. A3204

NOR-LAKE SCIENTIFIC
A Division of
NOR-LAKE, INCORPORATED
727 Second Street
P.O. Box 248
Hudson, Wisconsin 54016
800-477-5253
715-386-2323
800-388-5253 PARTS
715-386-4290 FAX
www.norlake.com

TOP



NSBR051WMW/0- FRONT



NSBR051WMW/0 - SIDE

SPECIFICATIONS

Model	NSBR051WMW/0	
Crated Height	34"	(86.4 cm)
Crated Width	31"	(78.0 cm)
Crated Depth	28"	(71.1 cm)
Crated Weight (lbs) (kg)	200	(91.0 kg)
Interior Height	22-7/8"	(58.1 cm)
Interior Width	23"	(58.4 cm)
Interior Depth	19-1/2"	(49.5 cm)
Overall Height-Adjustable*	34" to 35-1/4"	(86.4 cm to 89.5 cm)
Overall Width	27"	(68.6 cm)
Overall Depth	25"	(63.5 cm)
Gross Cubage (ft. ³) (m ³)	5.1	(0.15)
450 ML Bags # Units**	80	
Shelf Area (sq. ft.) (m ²)	2.66	(0.24)
Number of Shelves	1	
Number of Casters	4	Optional
Number of Legs	4	Standard
Condensing Unit Size	1/5	
Refrigerant	R-134A	
Electrical Characteristics	115/60/1	
Cord & Plug Furnished	Yes	
Maximum Fuse Size	15	
NEMA Plug Configuration	5-15P	
Total Amp Draw	4.3	

Specifications subject to change without notice.

* The overall heights shown in the table and drawings are with 4" adjustable legs. With the 3-5/8" casters the overall height is 33-5/8". With 2" levelers the overall height is adjustable from 32" to 32-1/2".

**Capacity may vary according to loading preferences and contents.

Voltage Model Suffix Code	Voltage Description	NEMA Plug	NEMA Receptacle
/0	115V, 1PH, 60HZ	5-15P	5-15R



Revision Date: 6/06
 © 2006 NOR-LAKE, INC.
 Printed in the U.S.A.
 Part Number: 123250

